



Autodesk Geospatial and Oracle Moving into FDO from OSE

Autodesk®

Revisiting Oracle OSE

Revisiting Oracle OSE

Oracle Spatial Extension

- Originally created in AutoCAD Map 4 (basic Oracle connection) all layers and features in one big Oracle table
- In Autodesk Map 5, the “Polygon and Advanced Oracle Extension” was available to Subscription Customers and was the first OSE that enabled a full DWG to Oracle Schema and stored Features by table. (I.e. Parcels in the Parcels table, Watermains and Hydrants in the Water table).
- The OSE still exists within AutoCAD Map 3D 2008

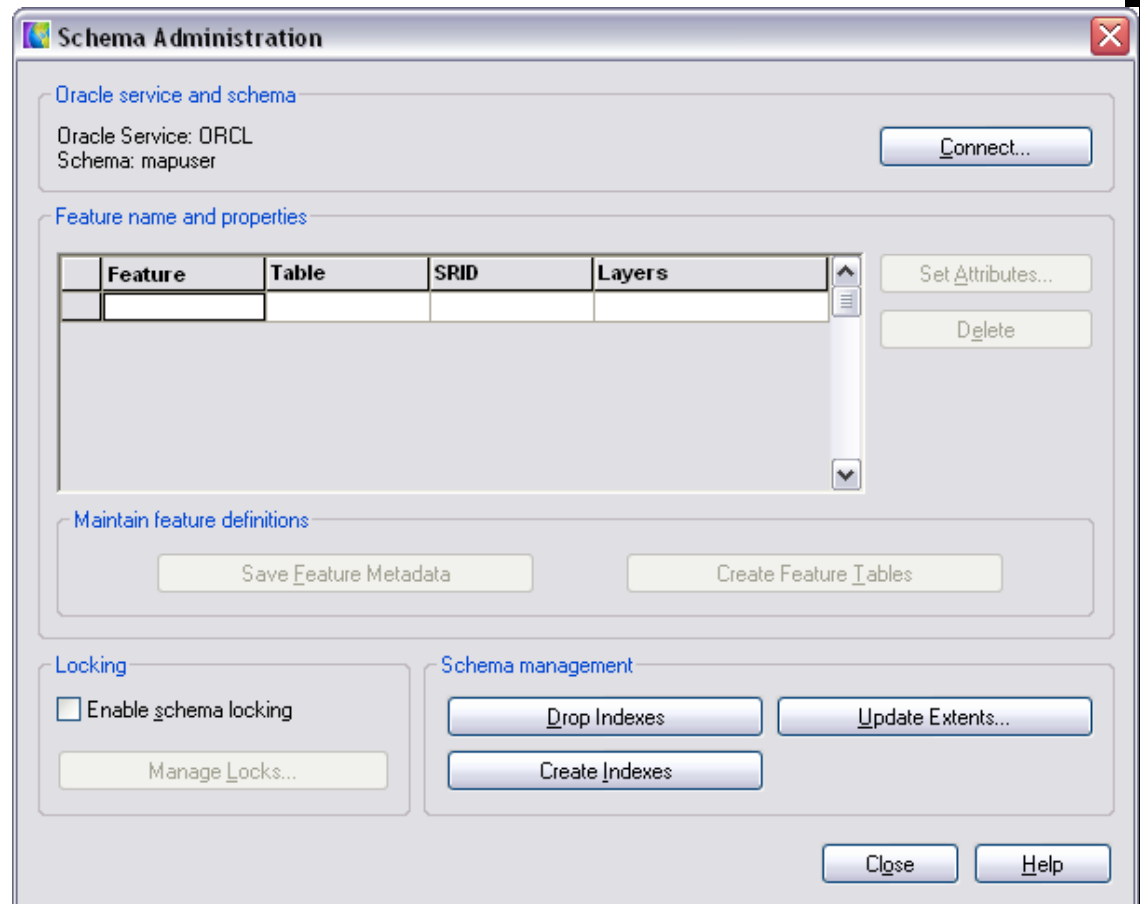
Revisiting Oracle OSE

Map 3D has a utility to create the OSE Schema automatically:
MAPOSEADMIN

Note: Must be a superuser to run this command.

Each Feature has:

- Associated Oracle table
- SRID (Coordinate System)
- List of Unique AutoCAD Layers
- Mapping of:
 - Link Templates
 - Object Data
 - Block Attributesto columns in Oracle



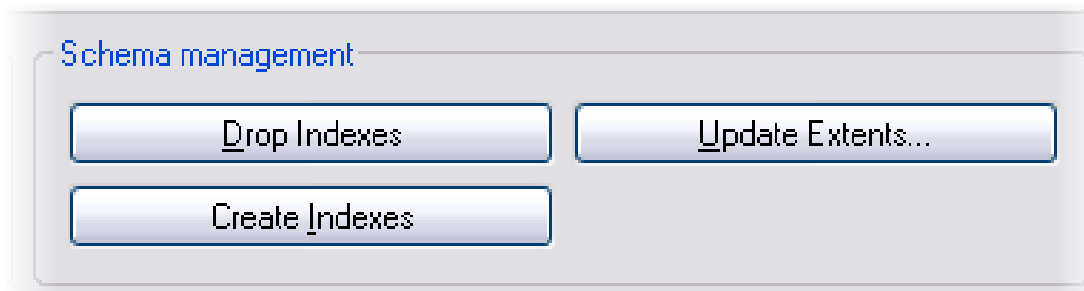
Revisiting Oracle OSE

Using the Oracle Spatial Advanced Tool bar, everyday users could:

- Dis/Connect to Oracle
- Write to Oracle
- Read From Oracle
- Add, Remove, Show Object in Edit set

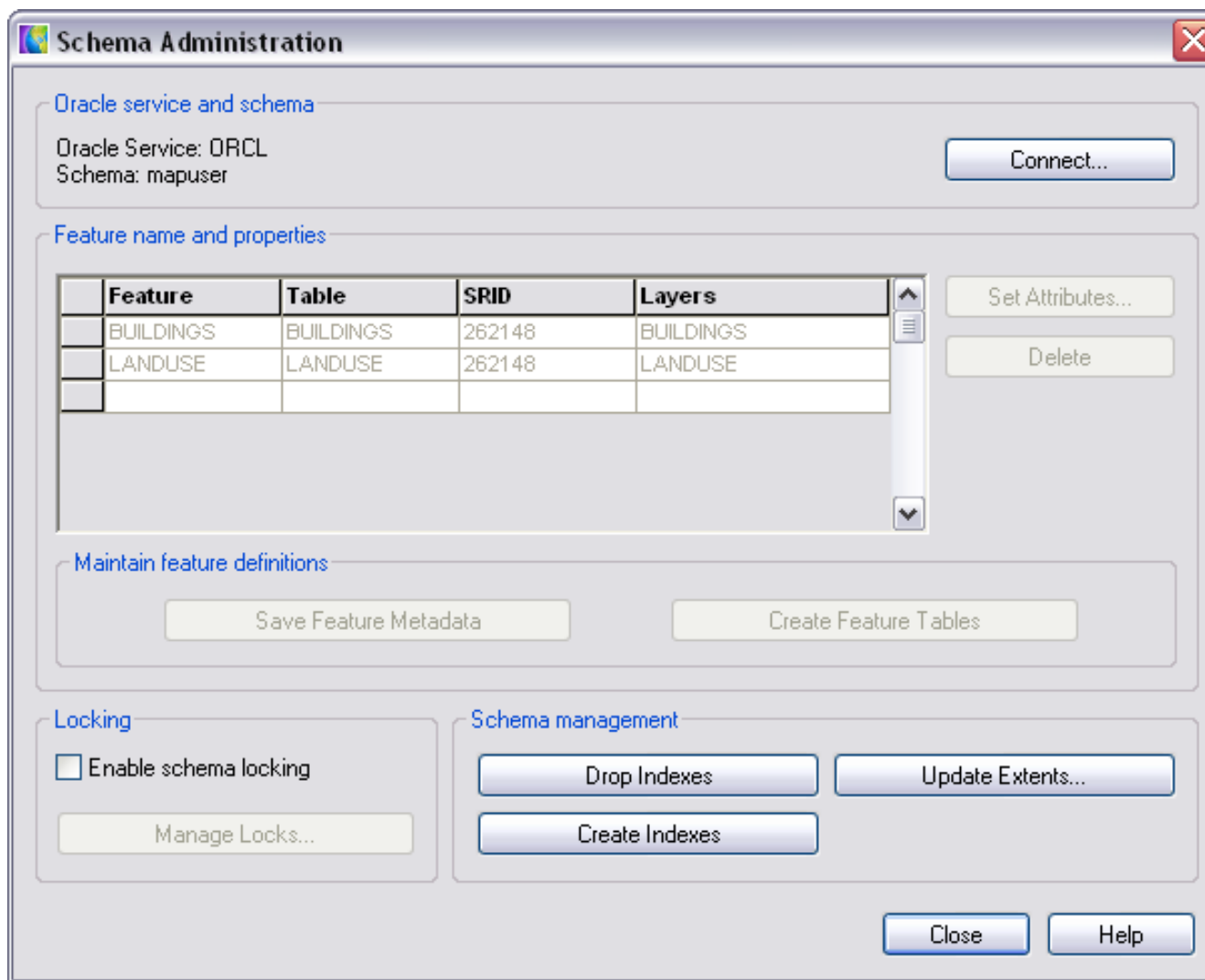


Once data was written once, the administrator would use MAPOSEADMIN was be used to update the Extents and Indexes of Oracle data.



Revisiting Oracle OSE

EXERCISE: Populate Oracle with OSE

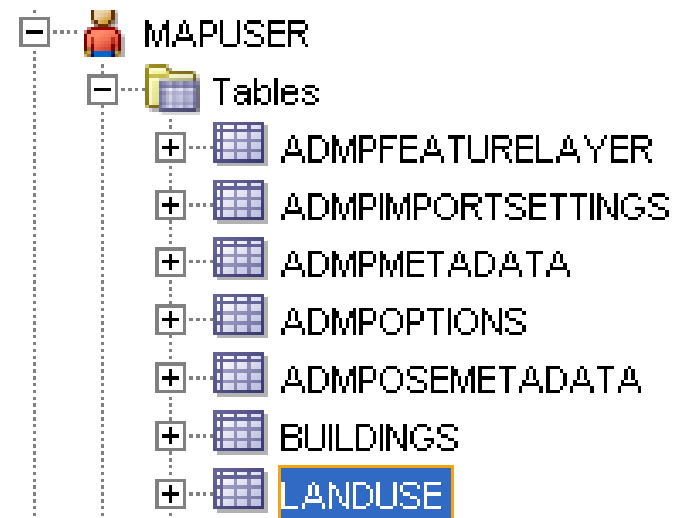


Revisiting Oracle OSE

Once data is written to Oracle, additional tables are created to keep track DWG related features:

5 New Tables are created:

- ADMPFEATURELAYER
- ADMPIMPORTSETTINGS
- ADMPMETADATA
- ADMPOPTIONS
- ADMPOSEMETADATA



Revisiting Oracle OSE

Each Feature Table has Autodesk OSE columns in addition to the Object Data, Link Template or Block Attribute Columns:

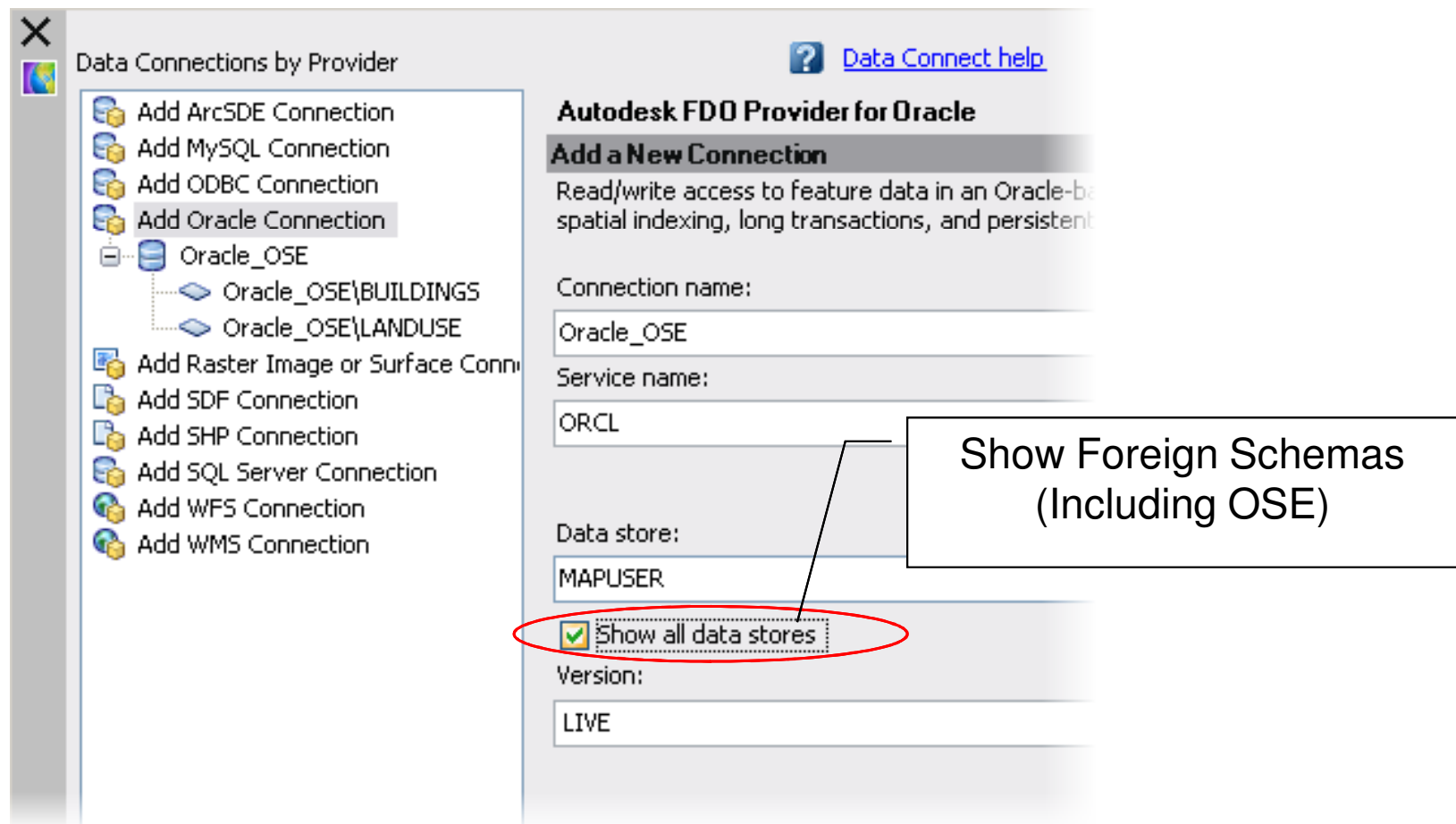
ENTITYID	ADMPPLAYER
GEOMETRY	ADMPPLINETYPESCALE
VERSIONNUMBER	ADMPPLINEWEIGHT
LOCKID	ADMPNORMAL
ADMPBLOCKNAME	ADMPPOLYPATCOLOR
ADMPBLOCKSCALE	ADMPPOLYPATTYPE
ADMPCLOSED	ADMPPLOTSTYLE
ADMPCOLOR	ADMPROTATION
ADMPENTITYTYPE	ADMPTEXTCONTENT
ADMPHYPERLINK	ADMPTEXTHEIGHT
ADMPJUSTIFICATION	ADMPTEXTSTYLE
ADMPLINETYPE	ADMPTHICKNESS
	ADMPWIDTH

Migration of Oracle OSE to FDO

Migration of Oracle OSE to FDO

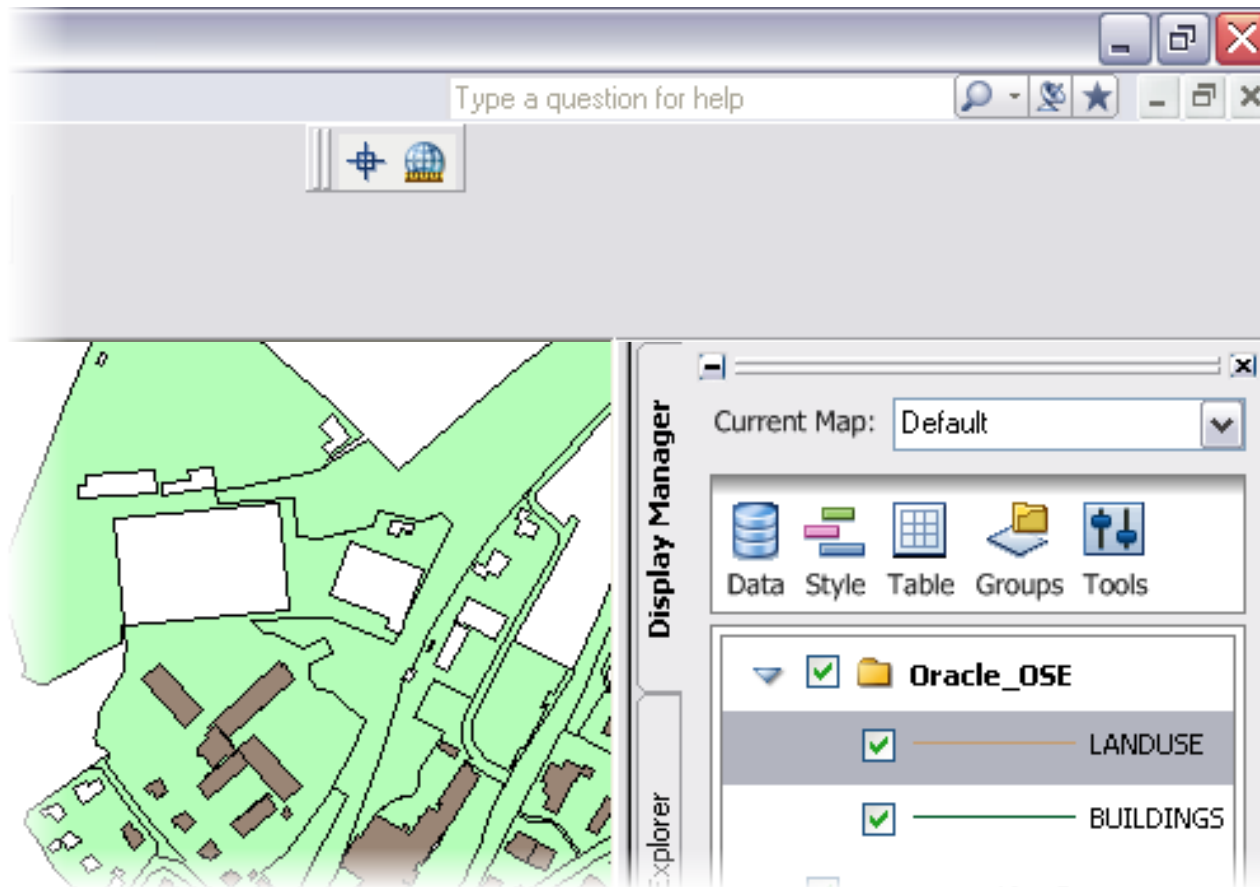
Before Migration consider...

OSE can be used as Foreign Schema



Migration of Oracle OSE to FDO

Example of Foreign Schema in Map 3D



Migration of Oracle OSE to FDO

But...

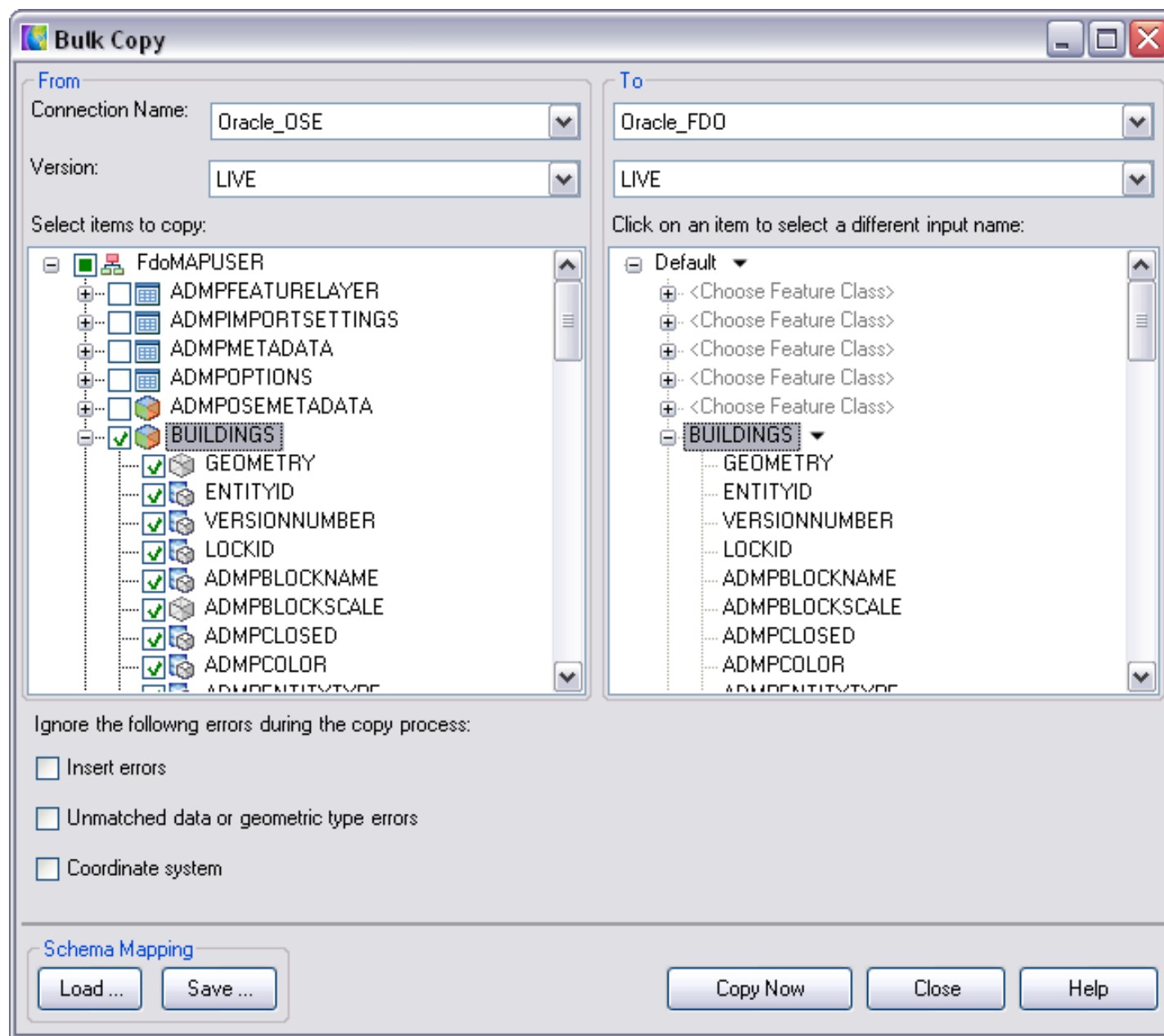
Foreign Schemas may be slower than native Oracle FDO Schema (especially in MapGuide)

So...

Migrate to FDO

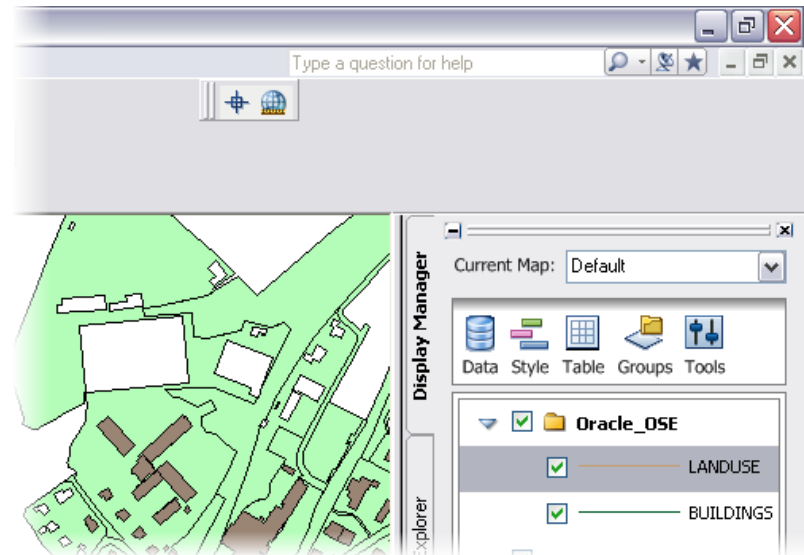
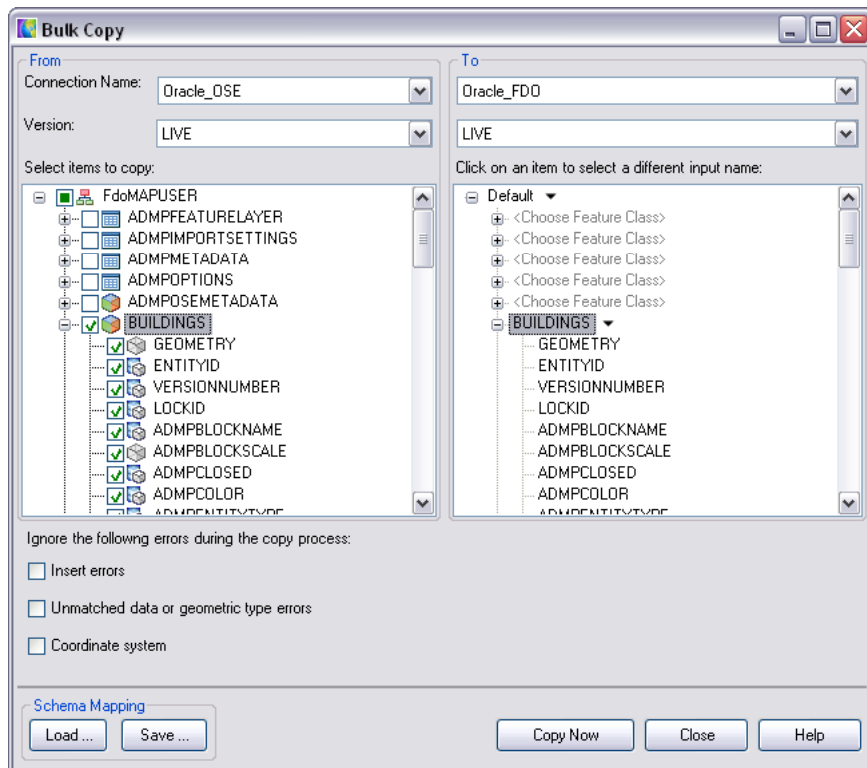
Migration of Oracle OSE to FDO

BULK COPY
OSE to FDO



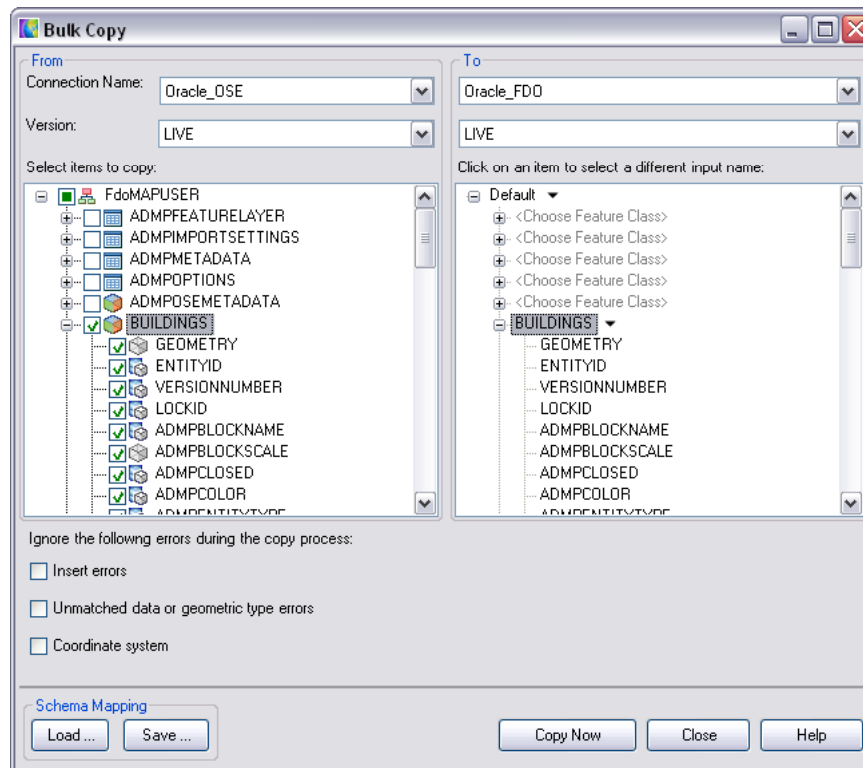
Migration of Oracle OSE to FDO

DEMONSTRATION: USING OSE AND FDO



Migration of Oracle OSE to FDO

EXERCISE: Copy OSE Features to FDO



THANKS!